

# Welcome!

---

Important info for today's session:

1. Slides are available on the event page:

<https://militaryfamilieslearningnetwork.org/event/52255>

2. Need tech support?

Email us at [MilFamLN@gmail.com](mailto:MilFamLN@gmail.com)

(write this down in case you need it later)

3. Select “All Panelists & Attendees” from the drop-down when commenting in the chat pod.

# Building a Battle Plan for Military and Veteran Families

<https://militaryfamilieslearningnetwork.org/event/52255>

Connecting military family service providers  
and Cooperative Extension professionals to  
research and to each other through engaging  
online learning opportunities

<https://militaryfamilieslearningnetwork.org>

# Today's Presenters

---



**Barbara Thompson**

Former Director,  
Office of MC&FP  
Office of the Deputy Assistant,  
Military Community & Family  
Policy



**Keisha Bailey**

Graduate Research Assistant,  
Human Development & Family  
Studies  
Military Family Research Institute at  
Purdue University



# Building a Battle Plan for Military and Veteran Families

**Barbara Thompson**

[barbarathompson02017@gmail.com](mailto:barbarathompson02017@gmail.com)

**Keisha Bailey**

[baile167@purdue.edu](mailto:baile167@purdue.edu)

Military Families Learning Network

October 24<sup>th</sup>, 2019

# Over to you!

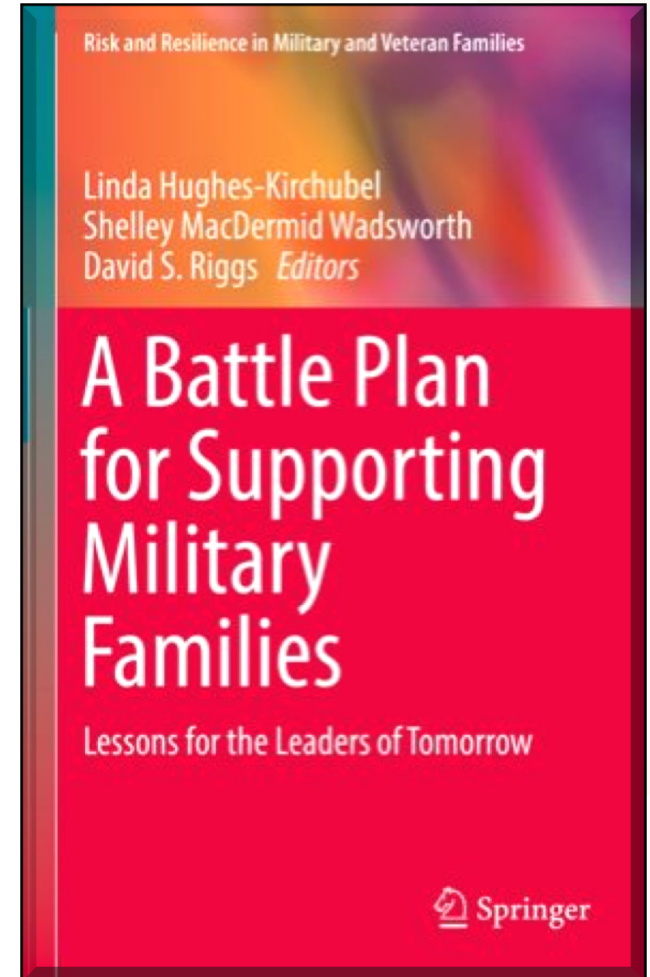
For whatever reason, have you ever found yourself in need of a Battle Plan?

- Yes
- No



# About the Battle Plan:

- Integrate family support systems into defense strategy.
- Anticipate issues and challenges that are likely to affect military families.
- Identify urgent gaps in support systems.
- Plan more effectively for medical and caregiving needs.
- Provide the resources military and veteran families need after military conflicts wind down



# How we got involved:

## Barbara Thompson

- Former director, Office of Military Family Readiness at DoD
- Served military families for 41 years prior to retirement in 2017
- Continues to support this mission by serving on Military Service Organization Boards
- Experienced 9/11 first hand in the Pentagon
- Part of the DoD team that set up the Pentagon Family Assistance Center the next day after 9/11

## Keisha Bailey

- Graduate Research Assistant
  - Military Family Research Institute at Purdue University
- Military Brat
  - Desert Storm Veteran
  - Vietnam Veteran
- Legally Blind



# Today's Presentation: An Outline

- Military Family Act Of 1986 to Military Family and Community Policy
- Examining the Pentagons Response to 9/11
  - Understanding the impact
  - Reviewing Internal communications
  - Creating a means for monitoring
- Post 9/11: Learning the Lessons



# History: Military Family Act Of 1986

- Travel And Transportation Allowance
- Hiring Preferences
- 24-hour Childcare
- Youth Sponsorship Program
- Dental Benefit Plans





# Think about your own battle plan...



# Question #1:

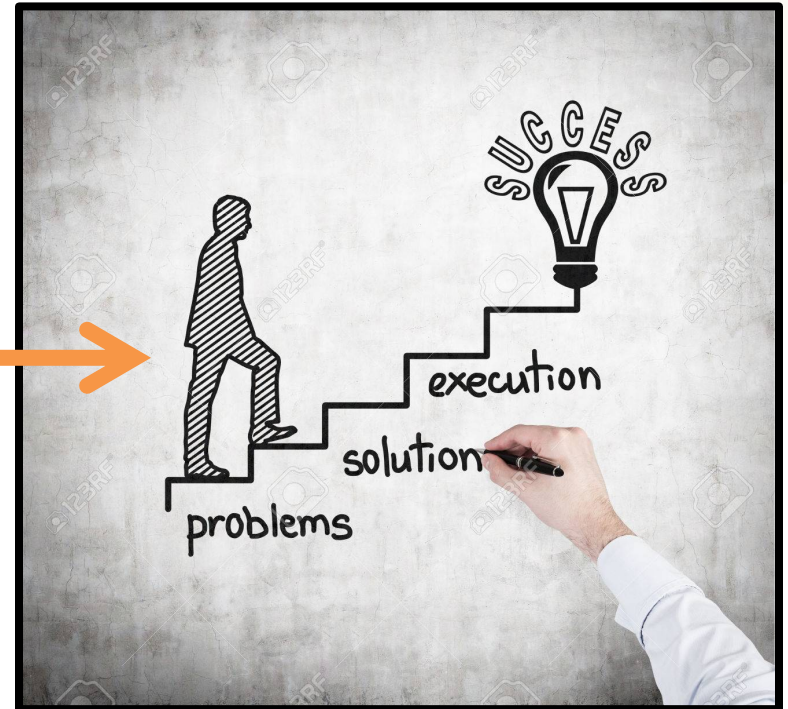


If you or your community has ever experienced a traumatic event or natural disaster:

- What made the response effective?
- What did you feel was missing?



## Question #2:



In terms of a resolution, where do/did you “FIT” in the hierarchy?

# Military Family Act Of 1986 → Military Family and Community Policy

Military Community and Family Policy is directly responsible for the DoD's quality of life policies, programs, and services to ensure military families ...

- Are **knowledgeable about the challenges** they may face
- Are **equipped** with the skills to function in the face of such challenges
- Are **aware of the resources** available to them to manage such challenges
- Know how to **access** those resources when needed

# Our BattlePlan: General Response to 9/11 + Post 9/11



# Understanding Military Families & Military Connected Communities

1. Who are military families?
2. What are military connected communities?
3. What does it mean for families and communities to be ready?





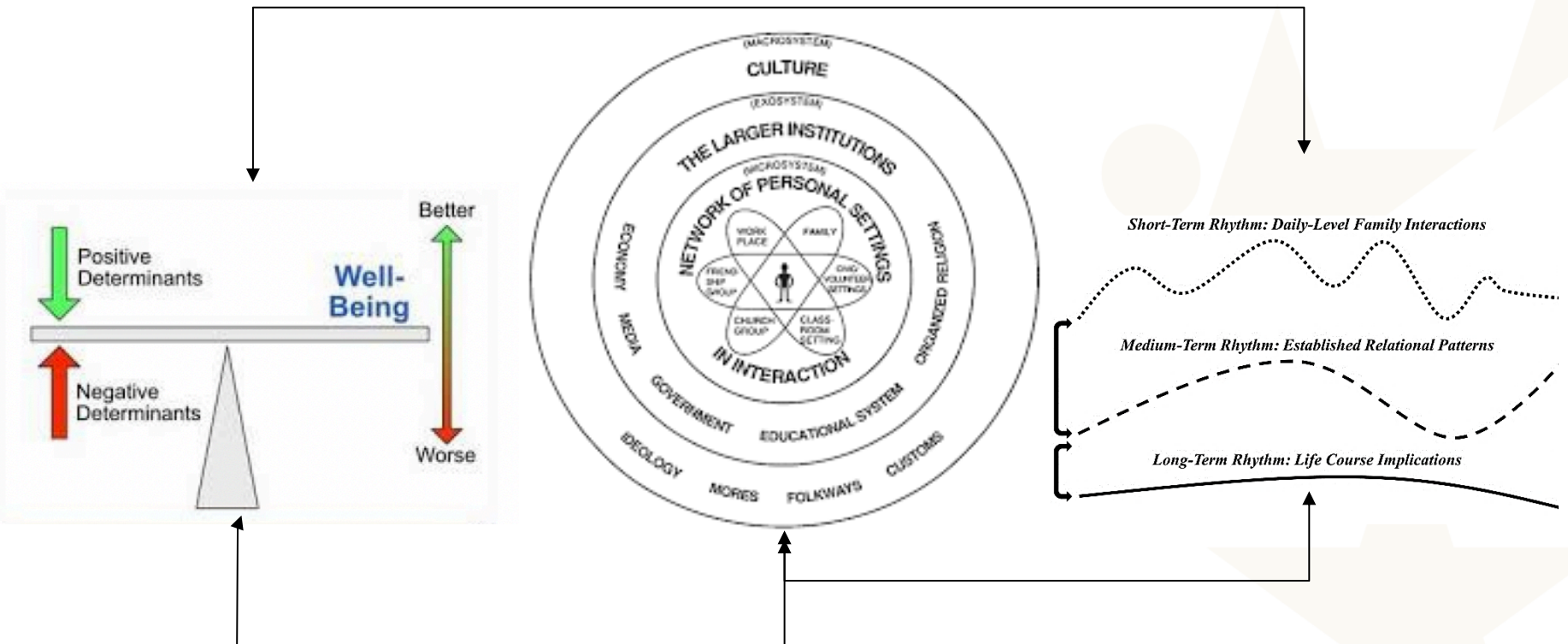
# Understanding Military Families & Military Connected Communities: *Situating ourselves*



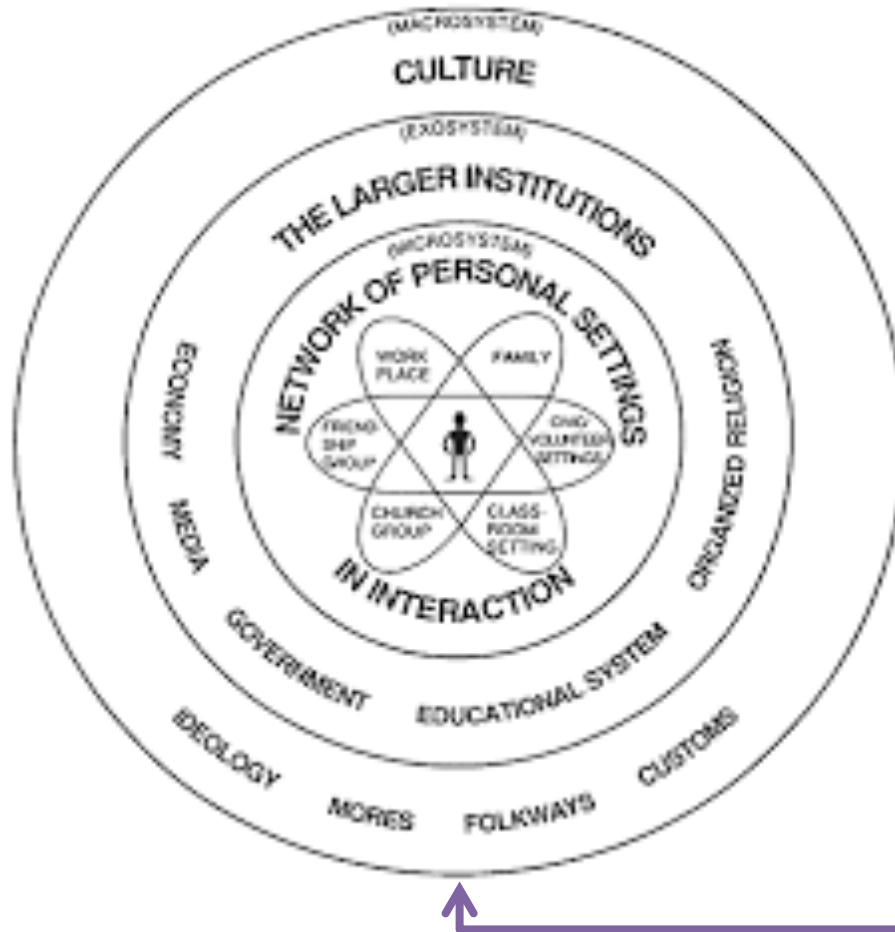
# Understanding Military Families & Military Connected Communities: *Definitions*

- **Military Family** Immediate family members related by blood, marriage, or adoption to a current member of the U.S. armed forces including one who was.
- **Family Readiness** is the state of being prepared to effectively navigate the challenges of daily living experienced in the unique context of military service, to include: mobility and financial readiness, mobilization and deployment readiness, and personal and family life readiness. (DODI 1342.22)

# Understanding Military Families & Military Connected Communities: *In Practice*



# Understanding Military Families & Military Connected Communities: *In Practice*



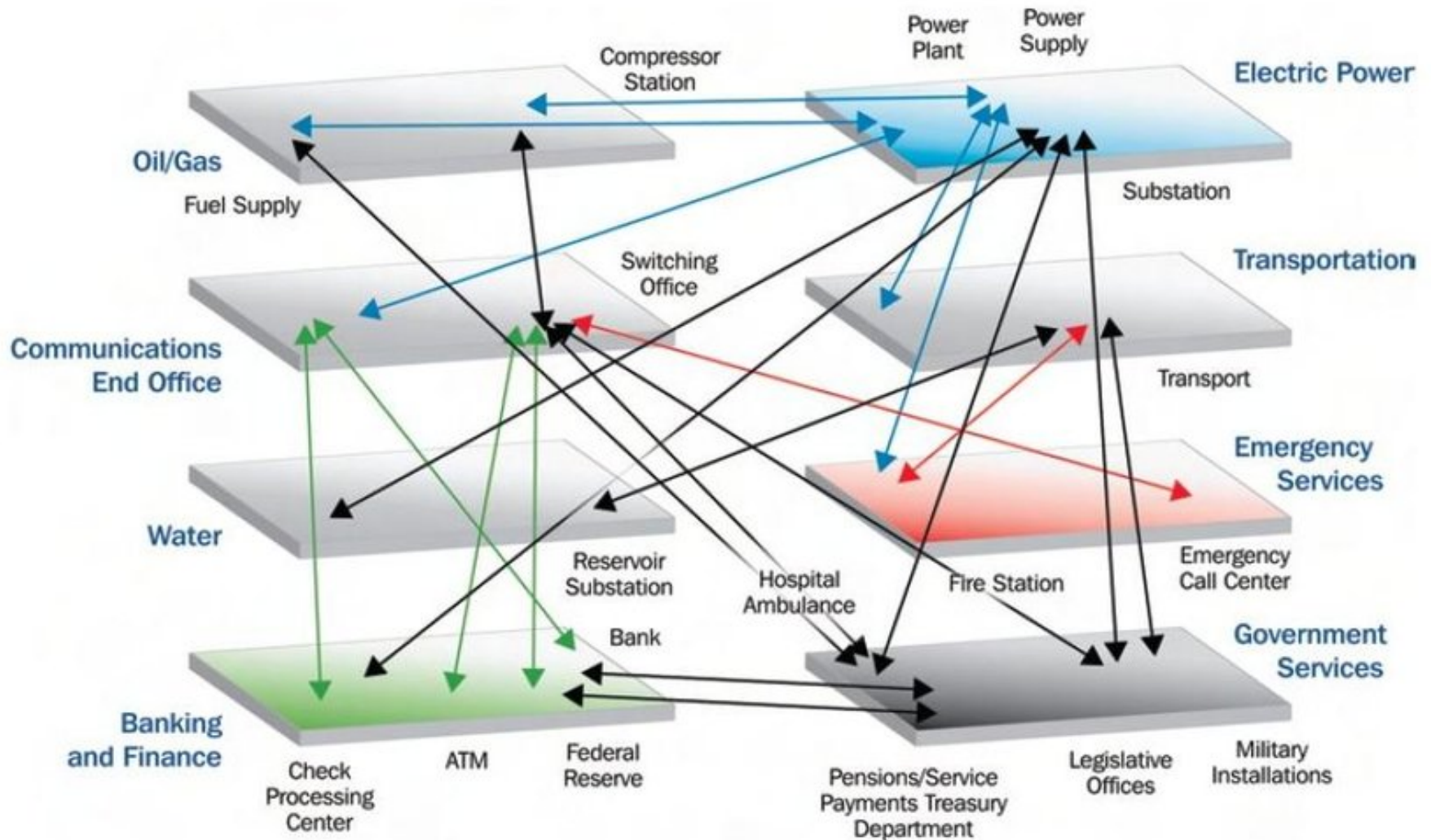
*Short-Term Rhythm: Daily-Level Family Interactions*

*Medium-Term Rhythm: Established Relational Patterns*

*Long-Term Rhythm: Life Course Implications*



# What actually happened: General Response to 9/11 + Post 9/11



# **Military Community and Family Policy Response: Family programs as part of the Family Readiness System**

- **Multiple access points:**
  - Military and Family Support Center
  - Military OneSource
  - Military Family Life Counselors
  - Medical Command
- **Fully Integrated Network**
- **Services which included:**
  - Morale, Welfare and Recreation services
  - Emergency family assistance
  - Transition assistance
  - Deployment assistance
  - Spouse Education and Career Opportunities

# Reassessing our BattlePlan: General Response to 9/11 + Post 9/11



BATTLE PLAN

Report

Identify

Declare

Respond

Remediate

Close



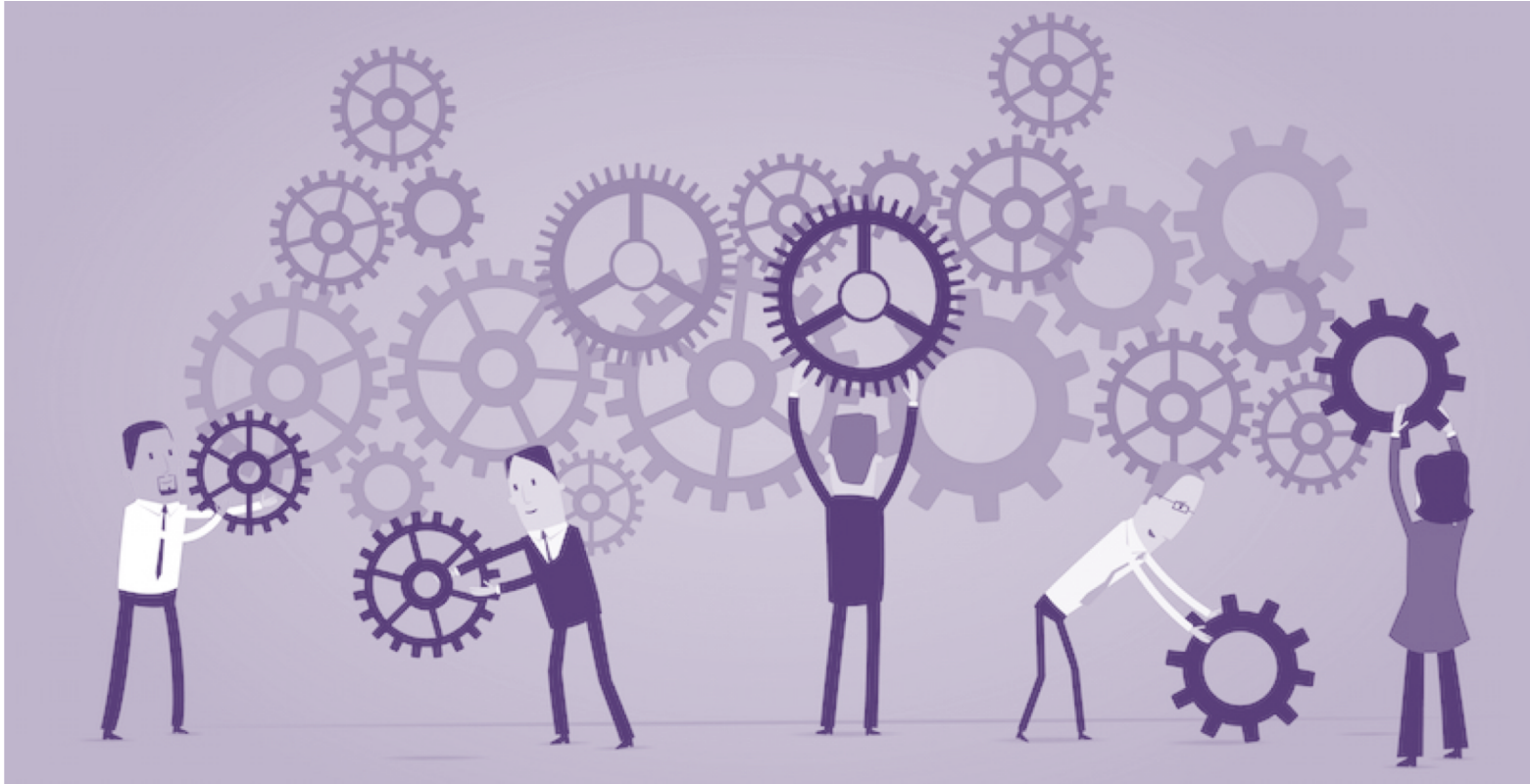
ice red hot!  
by Kevin McCalister

# General Response to 9/11 + Post 9/11:

## Something to remember

- Most responses to emergency assistance do not start out as a reaction to large-scale terrorist attack
- Most responses to emergency assistance are not geared to be sustained for such a protracted period of time
- Milestones and events mark shifts in how resources were delivered to meet the evolving needs of military families

# Lessons Learned:





# Lessons Learned: Communication & Language Matter



1. Identify generational differences
2. Capitalize on diverse communication channels

# Lessons Learned:

## Families are mission critical [in theory AND practice]



- Ensure Coordination
- Recognize Policy Differentials
  1. What is required for contingencies, disasters?
  2. What is required during peacetime?
- **Keep in mind special populations who will need a more intense level of support**



# Lessons Learned:

## Never Stop Building Your Network

- Establish a system of ongoing professional development for service providers – across disciplines
- Get to know your military community
- Immerse yourself in the components of the Military Family Readiness System **and** view yourself as a member of this system.



## In conclusion:

“No one can anticipate the what, where, and when of how the next tragedy will challenge providers of family support in both the military and civilian communities...



Nevertheless, we can and must be prepared to address the evolving needs of both military and civilian families.”



# Connect with the MFLN

---

Explore upcoming events, articles, resources, and more  
<https://militaryfamilieslearningnetwork.org>



# Evaluation & Continuing Education

---

Today's webinar offers a certificate of completion.

Go to the event page the link to the evaluation:

<https://militaryfamilieslearningnetwork.org/event/52255>

Continuing Education Credit/Certificate

Questions? Email [MilFamLN@gmail.com](mailto:MilFamLN@gmail.com).