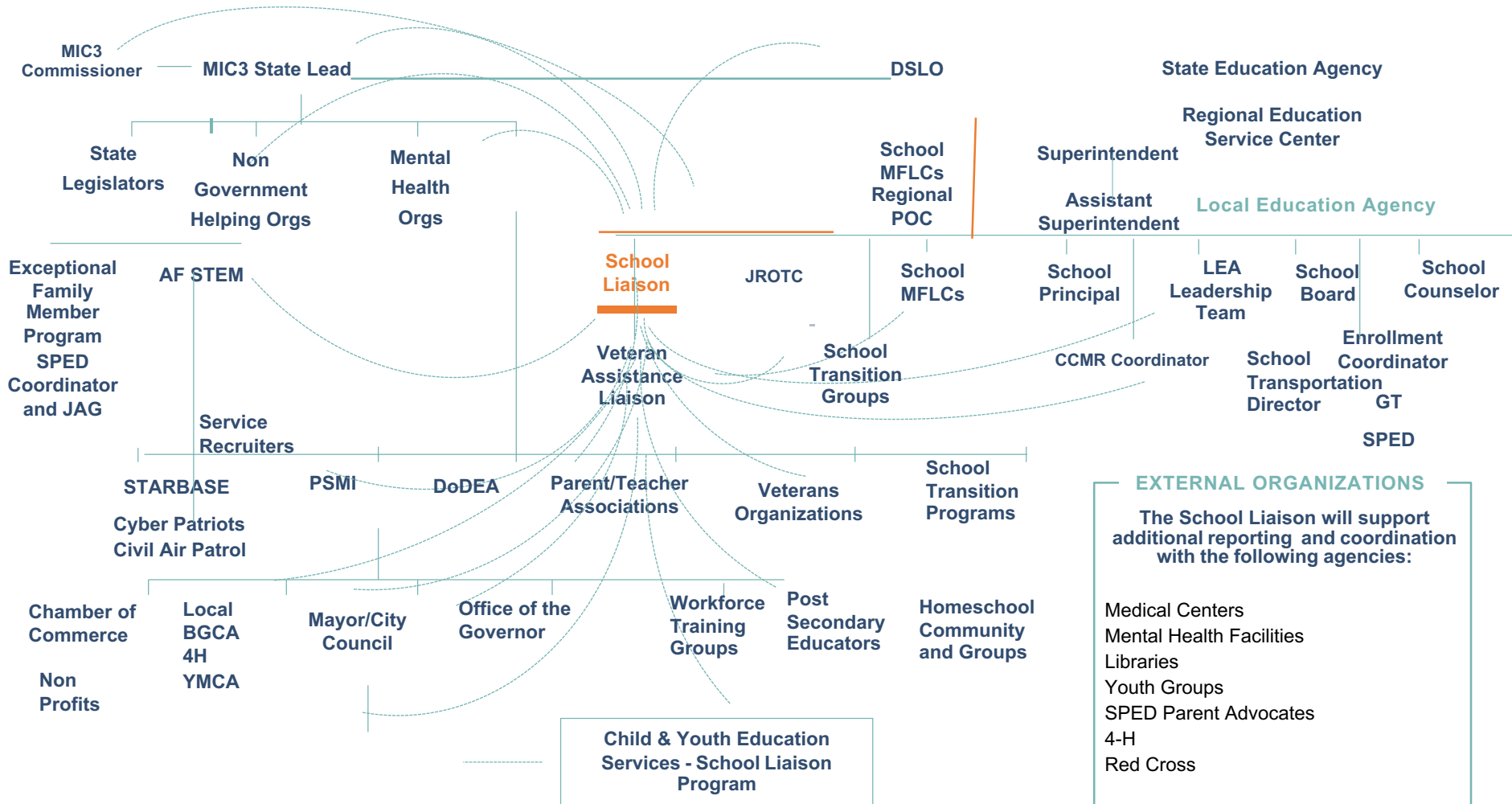


School Liaison Program

Community Stakeholders Interaction Chart



EXTERNAL ORGANIZATIONS

The School Liaison will support additional reporting and coordination with the following agencies:

- Medical Centers
- Mental Health Facilities
- Libraries
- Youth Groups
- SPED Parent Advocates
- 4-H
- Red Cross

*Not a complete list

KEY

The School Liaison will partner with various organizations to resolve education challenges and or concerns

Active daily collaboration relationship