

# Welcome!

---



Visit the event page to download a copy of the webinar slides and any additional resources.



Select **'Everyone'** from the drop-down menu when commenting in the chat pod.



Email us if you need tech support or have questions.

**Contact@OneOp.org**

**EVENT PAGE:**  
<https://oneop.org/learn/147548/>



# SNAP & SNAP-Ed: Supporting Food and Nutrition Security in Your Community

---

**EVENT PAGE:**  
<https://oneop.org/learn/147548/>



# SNAP & SNAP-Ed: Supporting Food and Nutrition Security in Your Community



### Event Materials

Visit the **event page** to download a copy of the presentation slides and any additional resources.



### Continuing Education

This webinar has been approved to offer continuing education credit. Please stay tuned for more information!

**EVENT PAGE:**  
<https://oneop.org/learn/147548/>



This material is based upon work supported by the National Institute of Food and Agriculture, U.S. Department of Agriculture, and the Office of Military Family Readiness Policy, U.S. Department of Defense under Award Number 2019-48770-30366.

<https://oneop.org>



# Military Family Readiness Academy

## On-Demand

- Self-paced course for all disciplines
- On-demand events with experts
- Engagement opportunities with colleagues
- Free continuing education credits

[OneOp.org/MFRA/FoodSecurity](https://OneOp.org/MFRA/FoodSecurity)



**Among our nation's active-duty members and their families, almost 24% are food insecure.**

**Food Security in Focus!**





7

## Today's Presenters



**Aurora Calvillo Buffington,**  
**PhD, RD, LD, FAND**  
*Branch Chief*  
*Nutrition Education Branch*  
 USDA  
 Food and Nutrition Service



**Doris Chin, MPH, RDN**  
*Nutritionist*  
*Nutrition Education Branch*  
 USDA  
 Food and Nutrition Service



**Laura Griffin, MHS**  
*Senior Policy Advisor &*  
*Chief of Staff*  
 USDA  
 Food and Nutrition Service

**EVENT PAGE:**  
<https://oneop.org/learn/147548/>



8

8

# Learning Objectives

After this presentation, attendees should be able to:

- Describe the purpose of the Supplemental Nutrition Assistance Program (SNAP)
- Explain how SNAP Nutrition Education (SNAP-Ed) promotes healthy dietary and physical activity behaviors
- Identify how SNAP-Ed aligns with national food and nutrition security strategies
- Give two examples to collaborate with state and local SNAP-Ed projects



Photo from SNAP-Ed Photo Gallery

# Purpose



Supplemental Nutrition Assistance Program (SNAP)

*Laura Griffin, MS*

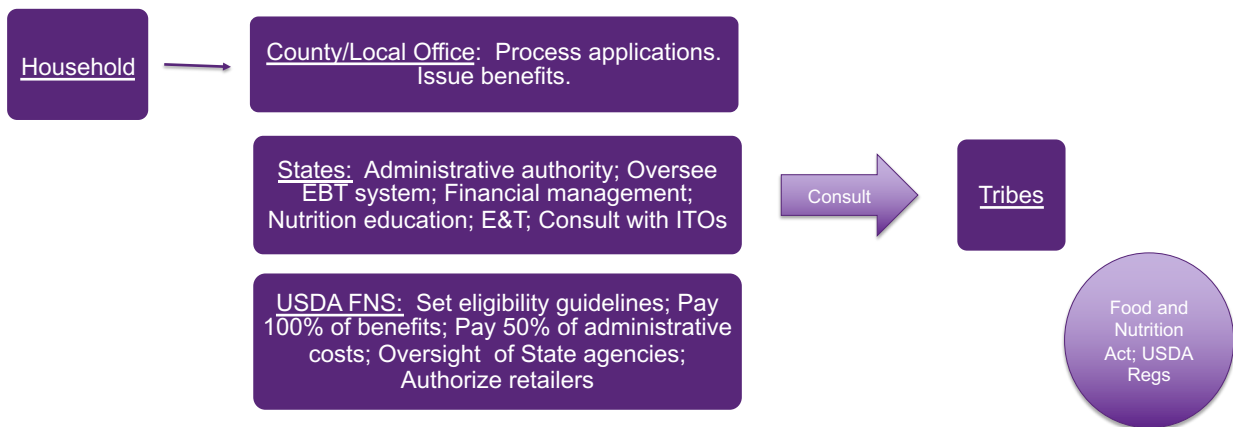
# Mission



- The Food and Nutrition Act of 2008:
  - “to provide for improved levels of nutrition among low-income households through a cooperative Federal-State program of food assistance to be operated through *normal channels of trade...*”
  - and “*increase food purchasing power* for all eligible households who apply for participation.”



# Structure



EBT: Electronic Benefit Transfer  
 E&T: Employment & Training  
 ITO: Indian Tribal Organization





## What does this mean?

- SNAP fights hunger and improves nutrition among low-income households.
- States administer SNAP under Federal rules and oversight. Eligibility is determined only by State and local office personnel.
- Eligible participants receive benefits on an EBT card to use at authorized retail stores.
- People make their own choices to apply.



13

13



## Application and Eligibility

- Application/Certification
  - Financial Criteria
  - Non-Financial Criteria
- Benefit Issuance
- Responsibilities
  - Periodic Reporting
  - Work Requirements and Time Limits
  - Recertification



14

14

## Definition of Household



- People with whom you purchase and prepare food.
- Automatic household (HH) types



Photo from SNAP-Ed Photo Gallery



15

15

## Where and how to apply



- Local Office
- Online
- Authorized representative



Photo from SNAP-Ed Photo Gallery



16

16





## What is required to start the application

---




- Name
- Address
- Signature

- More is always helpful, but this is the minimum by law.




17

17




## Financial Requirements


---




Resources (Elderly and Disabled)



Income (Gross, Net, Elderly and Disabled)




Deductions (Dependent care, Medical expenses for elderly and disabled more than \$35 and not covered by insurance, Excess shelter costs)




18

18




## Basic Allowance for Housing (BAH)

---




BAH counts as earned income in SNAP.  
Non-privatized on-base housing is not counted as income.  
Basic Needs Allowance counts as earned income for SNAP.




19

19




## Non-Financial Requirements


---




Work requirements



Able-bodied adults without dependents (ABAWD) time limits



Citizenship



20

20

## Benefit Issuance



- Benefits are provided on an EBT card.
- The total amount of SNAP benefits your household gets each month is called an allotment.



Photo from SNAP-Ed Photo Gallery



21

21

## What can you buy with SNAP benefits?



- Any food for the household including:
  - Fruits and vegetables
  - Meat, poultry and fish
  - Dairy products
  - Breads and cereals
  - Other foods such as snack food and non-alcoholic beverages
  - Seeds and plants to produce food for the household



Photo from SNAP-Ed Photo Gallery



22

22

## Where can you redeem SNAP benefits?



- Brick and Mortar Stores
  - Supermarkets
  - Convenience Stores
  
- Farmers Markets
  
- Online in all 50 States and DC
  - SNAP does not pay for delivery fees
  
- Soon mobile pay pilots



Photo from SNAP-Ed Photo Gallery

 Food Security in Focus

23

23

## Other Requirements




-  Interview
  
-  Provide verifications

 Food Security in Focus


24

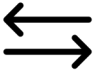
24





## Periodic Reporting

---

 Each HH is assigned a reporting cycle.

 Changes in income.

 Changes in HH composition.

 Food Security in Focus

25

25



## Recertification

---

- Each eligible HH is assigned a certification period.
- When the certification period ends, you must recertify in order to keep receiving benefits.

 Food Security in Focus

26

26

# Questions?

---



27

27

# About SNAP-Ed

---



SNAP Nutrition Education and Obesity Prevention Grant Program

*Aurora Calvillo Buffington, PhD, RDN, LD, FAND*



28

28




## Improving dietary intake is critical:

---

# 6 IN 10 ADULTS

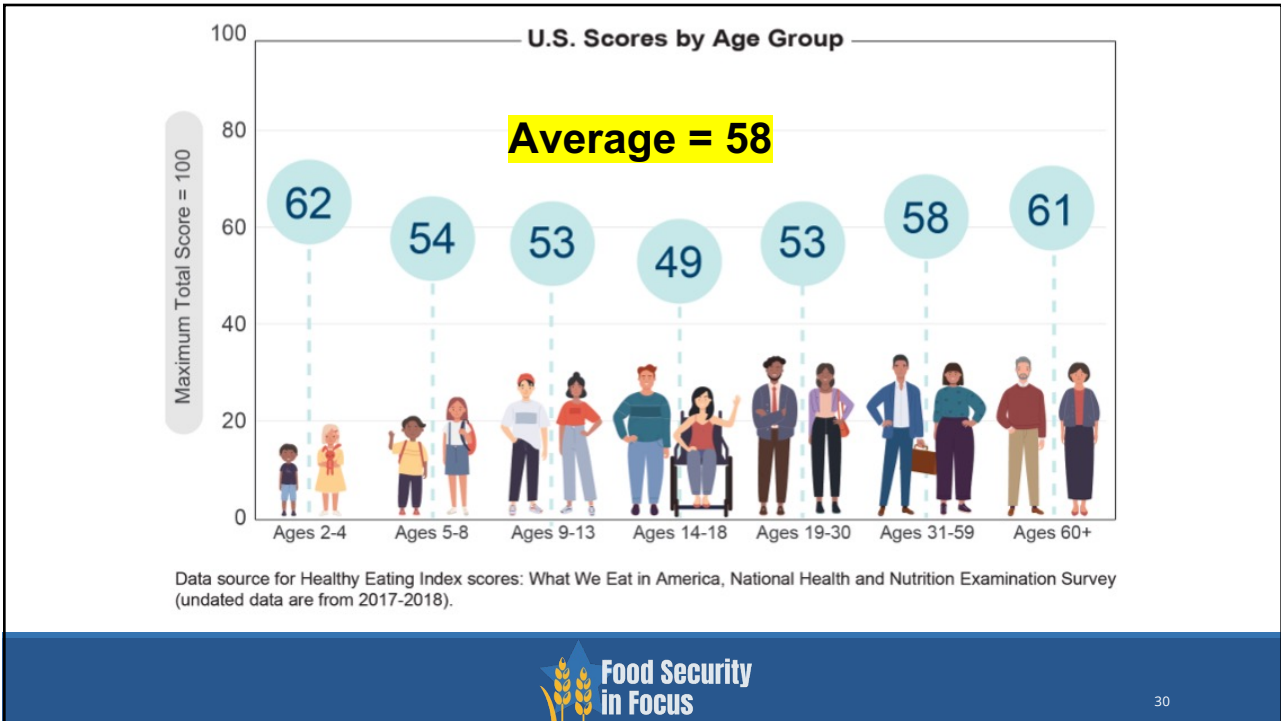
are living with one or more diet-related chronic diseases





29

29



30



# SNAP-Ed History

Food Stamps Nutrition Education (FSNE) authorized



# SNAP-Ed Goals

Improve the likelihood that persons eligible for SNAP will:

- make healthy food choices within a limited budget
- choose physically active lifestyles

*Consistent with the current Dietary Guidelines for Americans*





# Contemporary definition of nutrition education

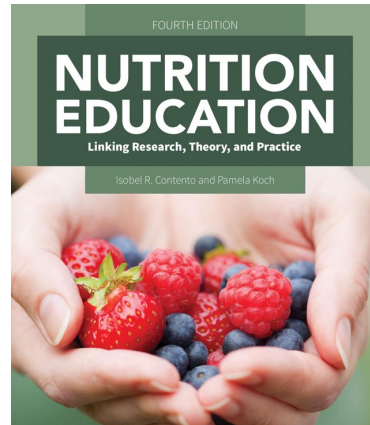


*"...any combination of educational strategies, accompanied by environmental supports, designed to motivate and facilitate voluntary adoption of food choices and other food- and nutrition-related behaviors conducive to health and well-being."*

– Contento & Koch

- Delivered through multiple venues
- Enhances health and facilitates solutions

**Education ≠ info dissemination!**



Contento, I. R., & Koch, P. A. (2021). *Nutrition education: Linking research, theory, and Practice*. Jones & Bartlett Learning.



# SNAP-Ed Focus



**Health promotion and primary prevention** for nutrition-related chronic diseases

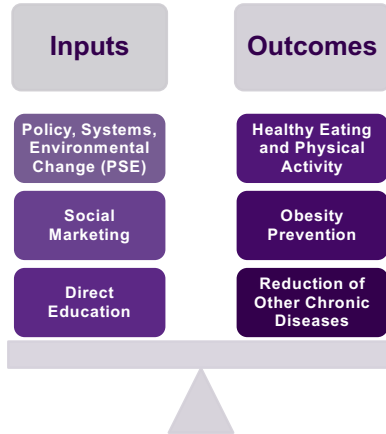
**Behaviorally-focused, evidence-based** nutrition education and obesity prevention



Photo from SNAP-Ed Photo Gallery



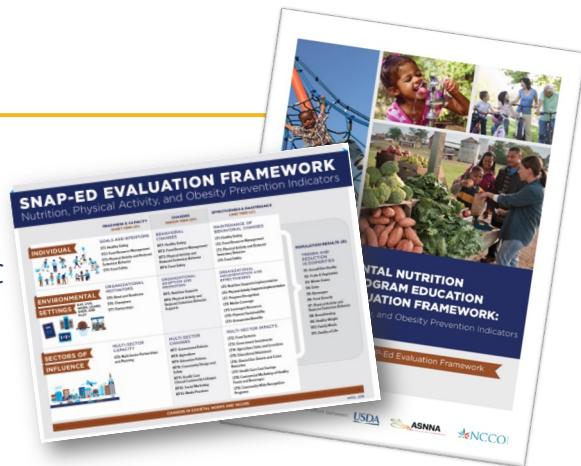
# SNAP-Ed Comprehensive Approach



# Program Evaluation

*"A systematic method for collecting, analyzing, and using data to examine the effectiveness and efficiency of programs and, as importantly, to contribute to continuous program improvement." - CDC*

- Data aids in decision making
- Stewardship of public health dollars
- Identify best programs
- Implementation and sustainability
- Program improvement



<https://snaped.fns.usda.gov/program-administration/snap-ed-evaluation-framework>




# SNAP-ED EVALUATION FRAMEWORK

Nutrition, Physical Activity, and Obesity Prevention Indicators

	READINESS & CAPACITY SHORT TERM (ST)	CHANGES MEDIUM TERM (MT)	EFFECTIVENESS & MAINTENANCE LONG TERM (LT)	
<b>INDIVIDUAL</b>	<b>GOALS AND INTENTIONS</b> ST1: Healthy Eating ST2: Food Resource Management ST3: Physical Activity and Reduced Sedentary Behavior ST4: Food Safety	<b>BEHAVIORAL CHANGES</b> MT1: Healthy Eating MT2: Food Resource Management MT3: Physical Activity and Reduced Sedentary Behavior MT4: Food Safety	<b>MAINTENANCE OF BEHAVIORAL CHANGES</b> LT1: Healthy Eating LT2: Food Resource Management LT3: Physical Activity and Reduced Sedentary Behavior LT4: Food Safety	<b>POPULATION RESULTS (R)</b>  <b>TRENDS AND REDUCTION IN DISPARITIES</b> R1: Overall Diet Quality R2: Fruits & Vegetables R3: Whole Grains R4: Dairy R5: Beverages R6: Food Security R7: Physical Activity and Reduced Sedentary Behavior R8: Breastfeeding R9: Healthy Weight R10: Family Meals R11: Quality of Life
<b>ENVIRONMENTAL SETTINGS</b>	<b>ORGANIZATIONAL MOTIVATORS</b> ST5: Need and Readiness ST6: Champions ST7: Partnerships	<b>ORGANIZATIONAL ADOPTION AND PROMOTION</b> MT5: Nutrition Supports MT6: Physical Activity and Reduced Sedentary Behavior Supports	<b>ORGANIZATIONAL IMPLEMENTATION AND EFFECTIVENESS</b> LT5: Nutrition Supports Implementation LT6: Physical Activity Supports Implementation LT7: Program Recognition LT8: Media Coverage LT9: Leveraged Resources LT10: Planned Sustainability LT11: Unexpected Benefits	
<b>SECTORS OF INFLUENCE</b>	<b>MULTI-SECTOR CAPACITY</b> ST8: Multi-Sector Partnerships and Planning	<b>MULTI-SECTOR CHANGES</b> MT7: Government Policies MT8: Agriculture MT9: Education Policies MT10: Community Design and Safety MT11: Health Care MT12: Social Marketing MT13: Media Practices	<b>MULTI-SECTOR IMPACTS</b> LT12: Food Systems LT13: Government Investments LT14: Agriculture Sales and Incentives LT15: Educational Attainment LT16: Shared Use Streets and Crime Reduction LT17: Health Care Cost Savings LT18: Commercial Marketing of Healthy Foods and Beverages LT19: Community-Wide Recognition Programs	

CHANGES IN SOCIETAL NORMS AND VALUES

APRIL 2016



Putting Healthy Food Within Reach

38



38

# National SNAP-Ed Information Clearinghouse



Putting Healthy Food Within Reach

## SNAP-Ed Connection



## SNAP-Ed Toolkit



39



39

## Uniquely positioned to impact food and nutrition security

- Nutrition assistance programs
  - 16 FNS programs
  - Serve 1 in 4 Americans
- Dietary Guidelines and MyPlate
- Nutrition education and promotion
- Other USDA investments



Photo from SNAP-Ed Photo Gallery



40

40

## COVID death rates

are an example of disparities caused by structural inequity.



[How the Omicron Subvariant BA.5 Became a Master of Disguise — and What It Means for the Current COVID-19 Surge | National Institute of Food and Agriculture \(usda.gov\)](#)



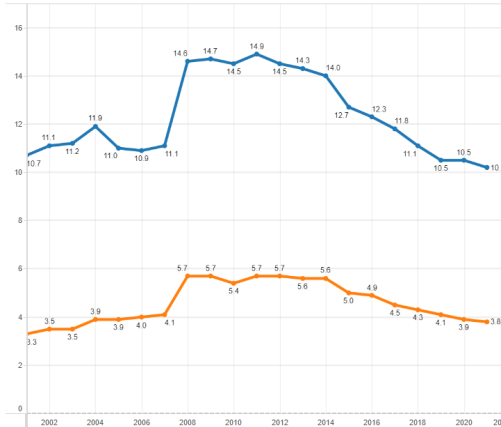
41

41

## Trends in the prevalence of food insecurity and very low food security in U.S. households, 2001-21, percent of households



Coleman-Jensen A, Rabbitt MP, Gregory CA, and Singh A. *Household Food Security in the United States in 2021*. Economic Research Report No. (ERR-309), published September 2022.



Food insecurity

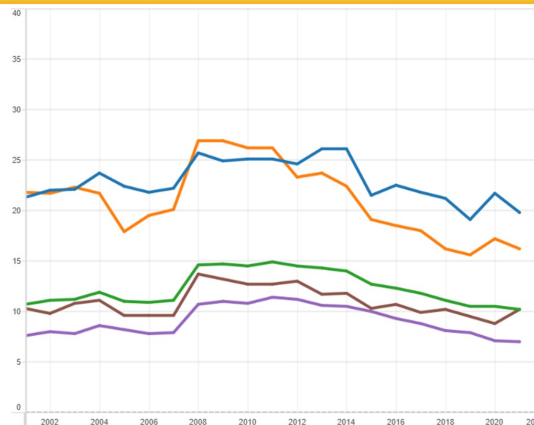
Very low food security



## Trends in food insecurity by race and ethnicity, 2001-21



Coleman-Jensen A, Rabbitt MP, Gregory CA, and Singh A. *Household Food Security in the United States in 2021*. Economic Research Report No. (ERR-309), published September 2022.



Black, non-Hispanic  
Hispanic

All Households  
Other, non-Hispanic  
White, non-Hispanic



# Social Determinants of Health

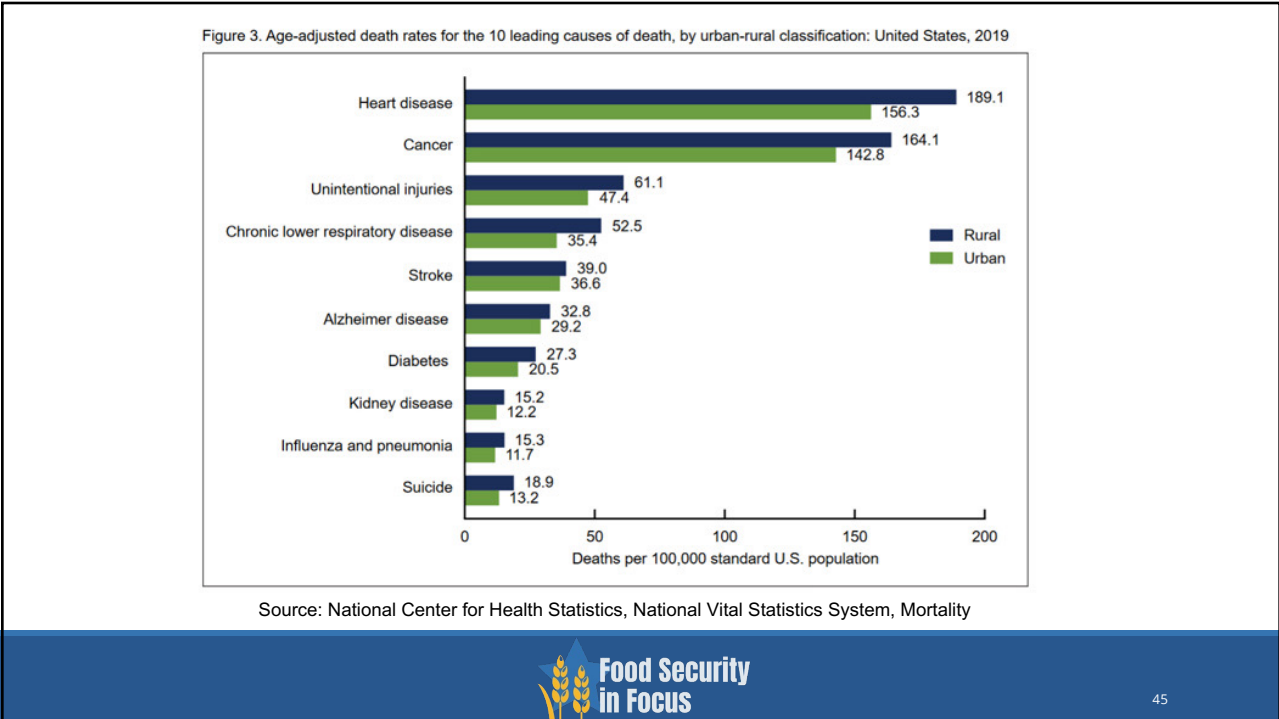
**USDA**  
**SNAP** Supplemental Nutrition Assistance Program  
Putting Healthy Food Within Reach

<https://www.cdc.gov/publichealthgateway/sdoh/index.html>

**Food Security in Focus**

44

44



45



"Across the Department we recognize that food and health are inherently intertwined, and we're leaning into our powerful tools to help **reduce chronic diseases, advance equity and promote overall well-being.** We look forward to working with our stakeholders to achieve this vision."

Secretary Vilsack



## Nutrition security:



Consistent and equitable access to healthy, safe, and affordable foods essential to optimal health and well-being



Photo from SNAP-Ed Photo Gallery



## USDA's Four-Pillar Approach



<b>Meaningful Support</b>	<b>Healthy Food</b>	<b>Collaborative Action</b>	<b>Equitable Systems</b>
			

<https://www.usda.gov/nutrition-security>

48

48

## National Strategy on Hunger, Nutrition, and Health



Anchored around five pillars and provides a roadmap for:

- Actions the federal government will take administratively;
- Several legislative proposals; and
- A call to action for private sector; local, state, Tribal, territory governments; philanthropy; civil society; and other partners.



**Improve food access and affordability**



**Integrate nutrition and health**



**Empower all consumers to make and have access to healthy choices**



**Support physical activity for all**



**Enhance nutrition and food security research**

#WHConfHungerHealth  
tinyurl.com/whconfshareyourvoice


49

49





LEVERAGING THE WHITE HOUSE CONFERENCE  
TO PROMOTE AND ELEVATE NUTRITION SECURITY:

## The Role of the USDA Food and Nutrition Service

<https://www.fns.usda.gov/nutrition-security/fns-role>



50

50

# Questions?

---



51

51

# SNAP-Ed Partnerships



Communications, coordination, collaboration, collective impact

*Doris Chin, MPH, RDN*



# SNAP-Ed Coordination and Collaboration



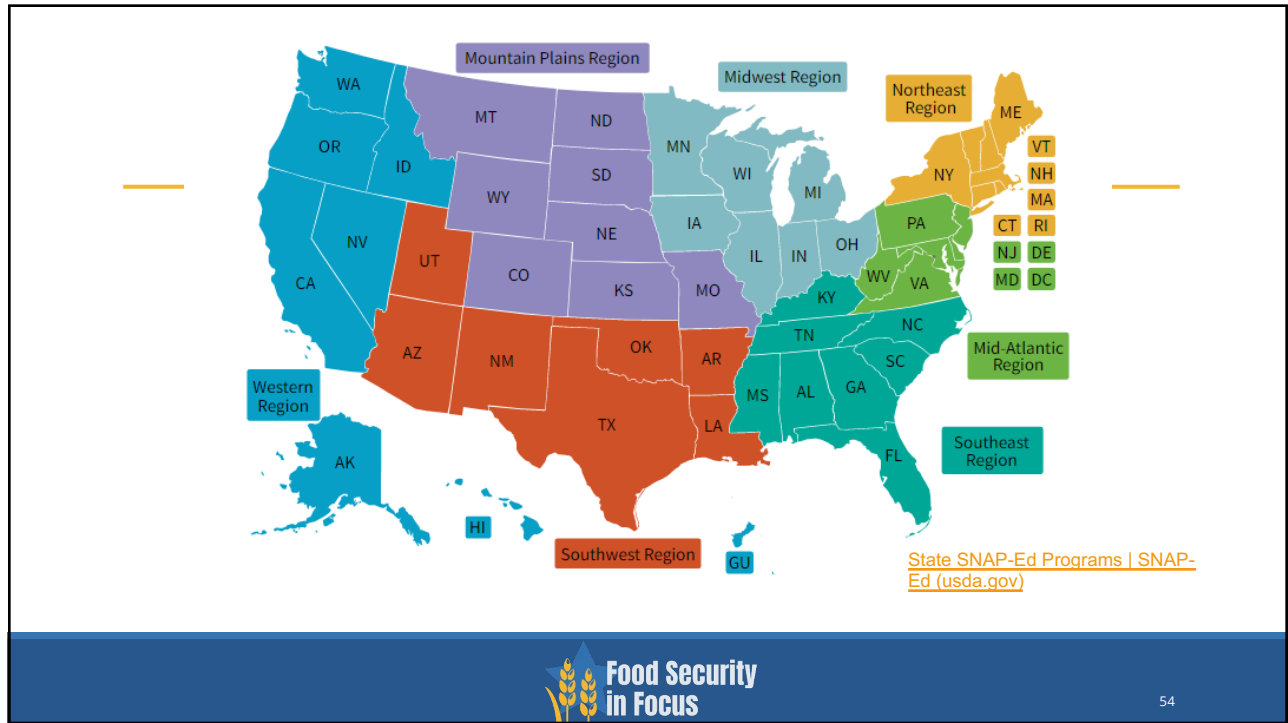
## Purpose

- Complement other nutrition education and multilevel public health approaches, and avoid duplication of efforts
- Leverage SNAP-Ed resources with funding of other organizations with similar missions
- Improve program effectiveness and efficiency
- Build capacity for sustainable, long-term community impact

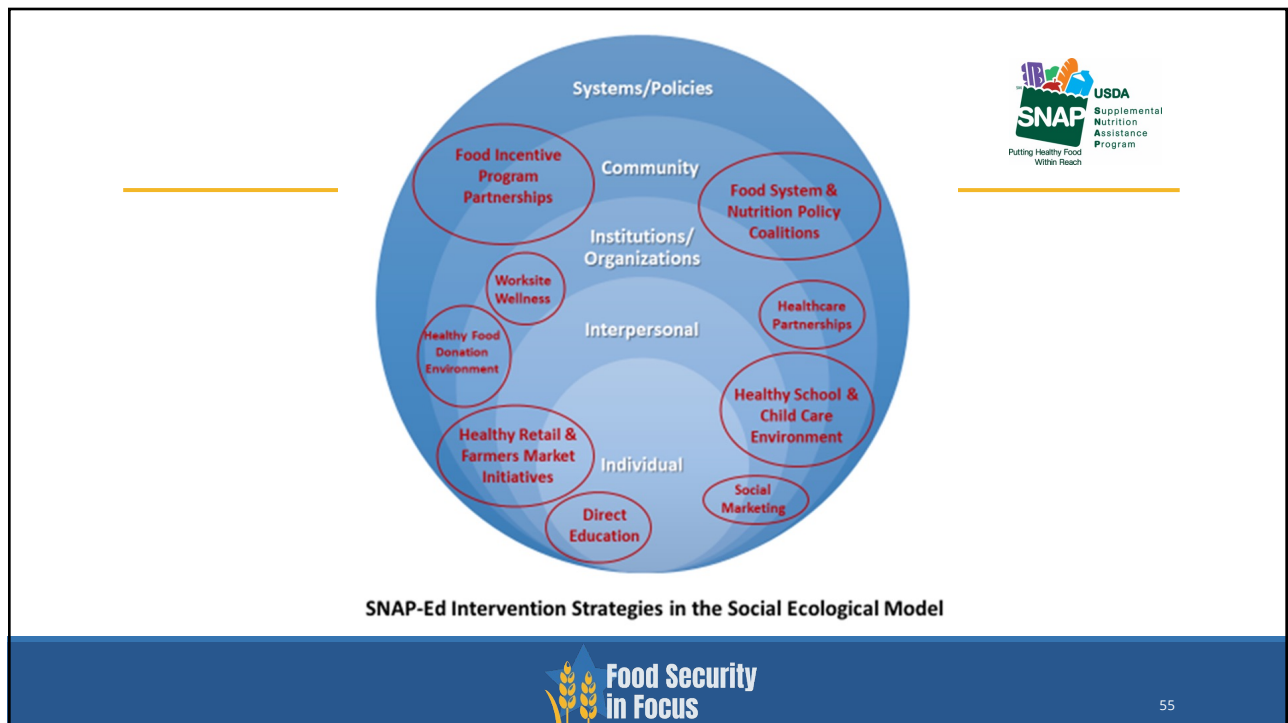


Photo from SNAP-Ed Photo Gallery





54



55

## State-Level Multisector Coalitions

- State Nutrition Action Council (SNAC)
- Governor Initiated Food/Nutrition Security Partnerships
- State Food Policy Council

## Community-Level

- Healthy Food Incentive Programs
- Local Food Policy Council
- Community Benefits – Healthcare Partners

## Organizational-Level

- Local School Wellness Policies
- Healthy Food Banks or Pantries
- Primary Care Health Clinics
- Faith-Based Organizations



56

56

## SNAP-Ed Coordination and Collaboration



Coordinate SNAP-Ed activities with other health promotion and nutrition improvement strategies (public or private)

Consult and coordinate with State and local operators of other FNS programs

Coordinate with other Federally-funded nutrition education programs that serve SNAP-Ed target population

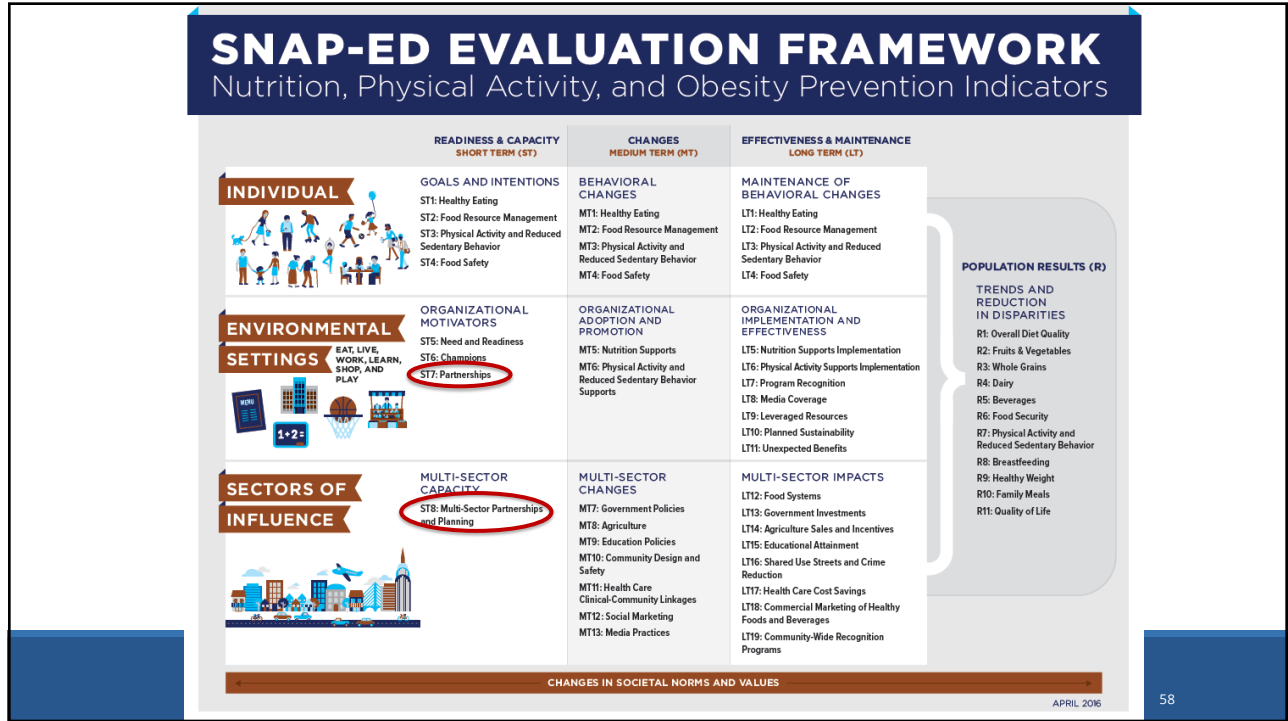
When SNAP-Ed funds are used

- State agencies maintain administrative control
- State must describe relationship in SNAP-Ed plan
- Relationship is formalized with memorandum of understanding, agreement, or contract



57

57




58

## Collective Impact Model



**Definition:**

“The commitment of a group of important actors from different sectors to a common agenda for solving a specific social problem”  
*(Kania and Kramer, Stanford Social Innovation Review, 2001)*



59



## Collective Impact Model

1. Common agenda
2. Shared measurement system
3. Mutually reinforcing activities
4. Continuous communication
5. Backbone support organization



## FNS Programs

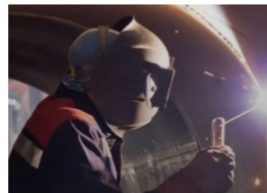
### Supplemental Nutrition Assistance Program



**Supplemental Nutrition Assistance Program (SNAP)**



**SNAP-Ed**



**SNAP Employment & Training**



# FNS Programs



## Special Supplemental Nutrition Program for Women, Infants, and Children



**Farmers Market Nutrition Program**



**Senior Farmers' Market Nutrition Program**



**Special Supplemental Nutrition Program for Women, Infants, and Children (WIC)**

<https://www.fns.usda.gov/programs>



62

62

# FNS Programs



## Child Nutrition Programs



**Summer Food Service Program**



**National School Lunch Program**



**Special Milk Program**



**School Breakfast Program**



**Team Nutrition**



**Fresh Fruit and Vegetable Program**



**Community Food Systems**



**Child and Adult Care Food Program**

<https://www.fns.usda.gov/programs>



63

63

# FNS Programs



## Food Distribution Programs/USDA Foods



Food Distribution Program on Indian Reservations



Commodity Supplemental Food Program



The Emergency Food Assistance Program



USDA Foods in Schools



Food Safety

<https://www.fns.usda.gov/programs>



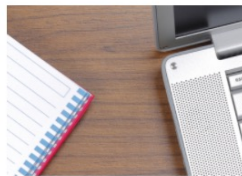
# FNS Programs



## Center for Nutrition Policy & Promotion



Center for Nutrition Policy and Promotion (CNPP)



Nutrition Evidence Systematic Review



MyPlate



Dietary Guidelines for Americans

<https://www.fns.usda.gov/programs>





# USDA Programs



## National Institute of Food and Agriculture (NIFA)

- Expanded Food and Nutrition Education Program (EFNEP)
- The Gus Schumacher Nutrition Incentive Program (GusNIP, formerly Food Insecurity Nutrition Incentive (FINI) Program)
  - Incentives through the purchase of fruits and vegetables
  - Prescribed fresh fruits and vegetables in addition to nutrition educational opportunities
  - [The Gretchen Swanson Center for Nutrition](#) offer incentive program training and technical assistance to applicants and grantees

## Agricultural Marketing Service (AMS)

- Local and Regional Food Systems Working Group (USDA staff only)

## Economic Research Service (ERS)

- Study trends and emerging issues in agriculture, food, the environment and rural America



# Federal Programs



- [Division of Nutrition, Physical Activity and Obesity](#)
  - [State Physical Activity and Nutrition \(SPAN\) Program](#)
  - [State Partnerships Improving Nutrition and Equity \(SPINE\) Program](#)



- [Nutrition and Health Disparities Implementation Working Group Pathway to Prevention \(P2P\)](#)



- [Nutrition Facts Label](#)



- [Health Center Program](#)



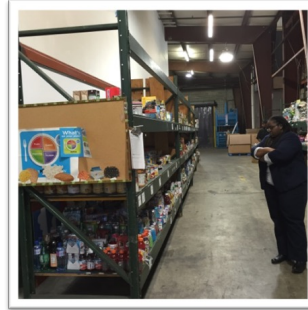
- [Local Foods Local Places Sustainable Management of Food](#)



# Policy, Systems, and Environmental Change Strategies – PSE



Worksite Healthy Meeting Policy,  
Healthy Cocina,  
Checkout Line with Healthy Snacks  
Los Angeles, Orange and  
San Diego Counties, CA



Healthy Donation  
Policy  
Newark, DE



# Cross-Program Coordination and Collaboration



Eat Right Philly  
Philadelphia, PA



# Multisector Coordination and Collaboration



Multisector collaboration leading to advances in community health of indigenous people



YPAR community food mapping and interactive online data search, 2018

A'Avutem (Elders) Garden planting and harvesting in 2020



UNIVERSITY OF CALIFORNIA  
Agriculture and Natural Resources



# Resources



State SNAP-Ed Programs <https://snaped.fns.usda.gov/state-snap-ed-programs>

FNS Nutrition Programs <https://www.fns.usda.gov/programs>

SNAP-Ed Toolkit <https://snapedtoolkit.org/>

SNAP-Ed Connection <https://snaped.fns.usda.gov/>

State Nutrition Action Council (SNAC) Toolkit <https://www.phi.org/wp-content/uploads/2022/01/SNAC-Toolkit-Final.pdf>



# Questions?

---



72

72

## Upcoming Food Security in Focus Event

---



### **Enhancing Food Security for Military Families with Cooperative Extension**

Tuesday, July 25, 2023; 11:00 am -12:30 pm EST

This webinar introduces programs and resources on food, food security, and community nutrition available through the Cooperative Extension System (CES) and invites service providers to explore collaborative opportunities in these areas.

**Continuing education credit will be available for this session!**

**EVENT PAGE:**  
<https://oneop.org/learn/147562/>



73

73

# Upcoming Food Security in Focus Event



## Respectful, Evidence-Based Care for Children with Elevated BMI

Thursday, August 17, 2023; 11:00 am -12:00 pm EST

This webinar reviews the evidence surrounding care for children with elevated BMI from both a nutrition and mental and behavioral health perspective.

**Continuing education credit will be available for this session!**

EVENT PAGE:  
<https://oneop.org/learn/151251/>



<https://oneop.org/practicingconnection/>

# Continuing Education



This webinar has been approved for the following **continuing education (CE) credits**:

- 1.5 CPEUs from the **Commission on Dietetic Registration (CDR)** for RDs and NDTRs.
- 1.5 CEs from the **Association for Financial Counseling & Planning Education (AFCPE)** for AFCs.
- 1.5 CEs from **The Center for Financial Certifications** for Certified Finance Counselors.
- 1.5 CEs from the **American Association for Family & Consumer Sciences (AAFCS)** for CFCS.
- 1.5 CEs from the **American Association for Family & Consumer Sciences (AAFCS)** for CNWE.
- 1.5 CEs from the **Early Intervention Training Program (EITP) at the University of Illinois**.
- 1.5 CEs from **UT Austin, Steve Hicks School of Social Work** for Social Workers, LPCs and LMFTs.
- 1.5 clock hours from the **Commission for Case Manager Certification** for Case Managers.
- 1.5 CEs from **The Patient Advocate Certification Board** for Board Certified Patient Advocates.
- OneOp **Certificate of Attendance** available.

### Evaluation Link

Go to the event page for the evaluation and post-test link.

[Continuing Education](#)

### Questions?

Email us at: [OneOpNutritionWellness@gmail.com](mailto:OneOpNutritionWellness@gmail.com)

**EVENT PAGE:**  
<https://oneop.org/learn/147548/>



# Connect with OneOp!

Explore upcoming events, articles, resources, and more!



<https://oneop.org>

